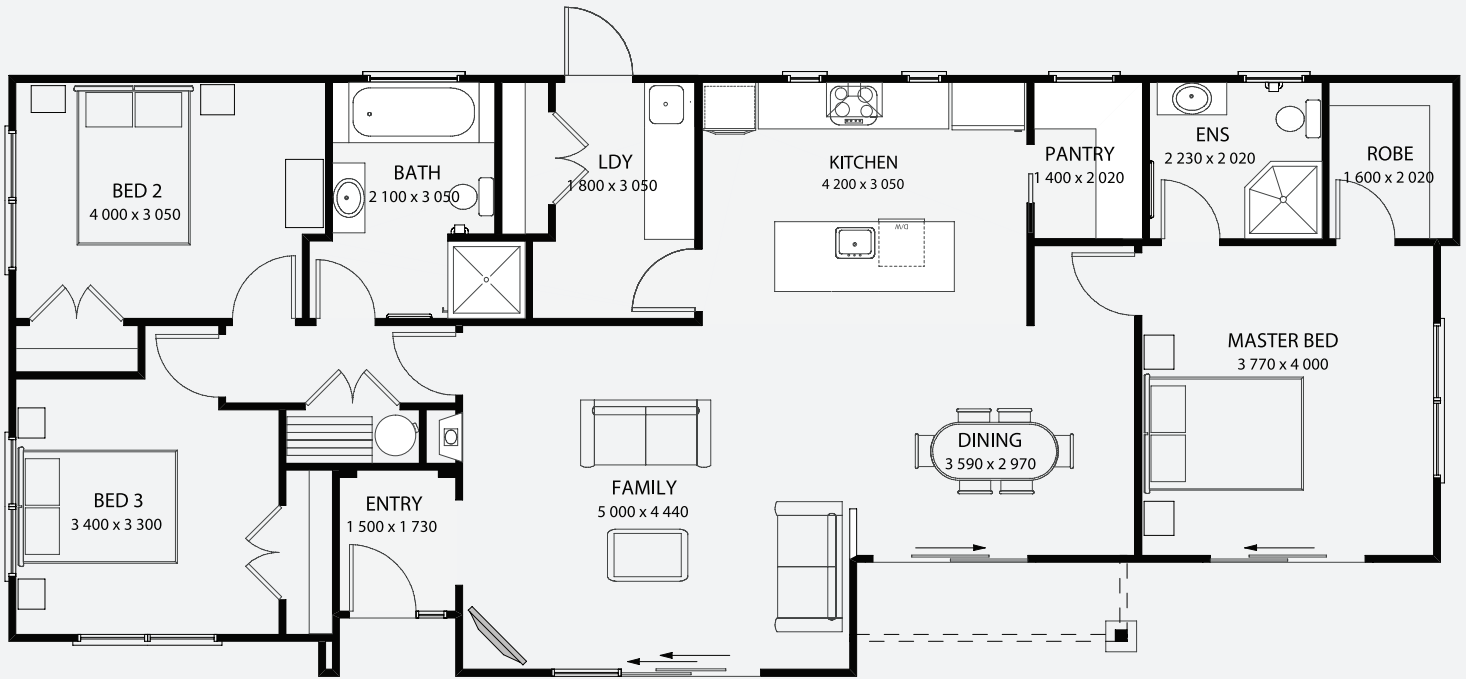


# maple 130



maple 130

130sqm

length: 18.740m  
width: 7.760m

transportable

A spacious home, great indoor/outdoor flow and open plan kitchen, dining and living areas. 3 bedrooms and 2 bathrooms.



## Our plans, Your Home...Your Way!

Is this plan almost you, but not quite your perfect home, make a few notes and pop in and see us!

Things I would like to change or add:

---

---

Things that are important for our new build:

---

---

Contact Us Now  
to get your plans underway



0800 140 140  
info@heartlandhome.co.nz  
www.heartlandhome.co.nz